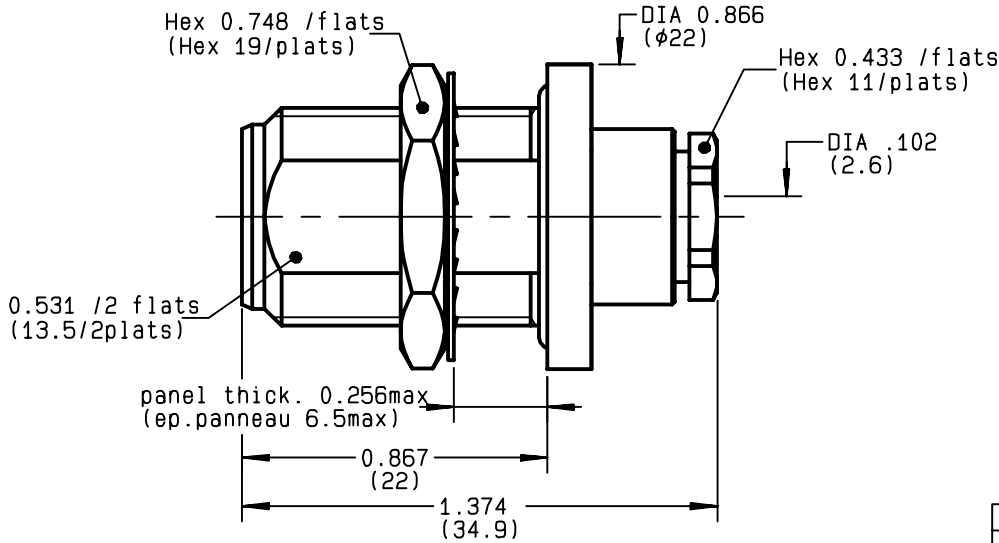
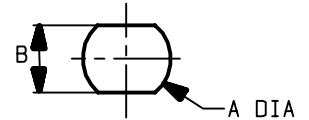


**STRAIGHT BULKHEAD JACK PANEL SEAL
CLAMP TYPE - CABLE 2.2/50 D**

R161.322.200
SERIES N



PERCAGE PANNEAU
MOUNTING HOLE



	MM		INCH	
	maxi	mini	maxi	mini
A	16.1	16	0.634	0.63
B	13.7	13.6	0.539	0.535

NOMINAL IMPEDANCE	50	Ω
FREQUENCY RANGE	0-11	GHz
TEMPERATURE RATING	-55/+155	°C
V.S.W.R	1.40 +	x F(GHz)Maxi
RF INSERTION LOSS	0.048	√F(GHz) dB Maxi
VOLTAGE RATING	250	Veff Maxi
DIELECTRIC WITHSTANDING VOLTAGE	750	Veff Mini
INSULATION RESISTANCE	5000	MΩMini
HERMETIC SEAL	NA	Atm.cm ³ /s
LEAKAGE (pressurized only)	NA	
MECHANICAL DURABILITY	500	Cycles
WEIGHT	41.2	gr
SPECIFICATION		

CABLES : **TS 2619**

OTHERS CHARACTERISTICS

CABLE RETENTION	120	N Mini
CENTER CONTACT RETENTION		
Axial force - mating end	27	N Mini
Axial force - opposite end	27	N Mini
Torque	NA	cm.N Mini
RECOMMENDED TORQUES		
Mating	NA	cm.N
Panel nut	500	cm.N
Clamp nut	450	cm.N

CONNECTOR PARTS	MATERIALS	FINISH	(all values are given in micrometers)
BODY	BRASS	BBR 2	
OUTER CONTACT	BRASS	BBR 2	
CENTER CONTACT	BERYLLIUM COPPER	GOLD 0.5 OVER NICKEL 2	
INSULATOR	PTFE	-	
GASKET	SILICONE RUBBER	-	
OTHERS PIECES	BRASS	BBR 2	

ISSUE	CREATION DATE	FILE PART-NUMBER
9843C00	05/09/1994	92-0019-094



Connect to the future

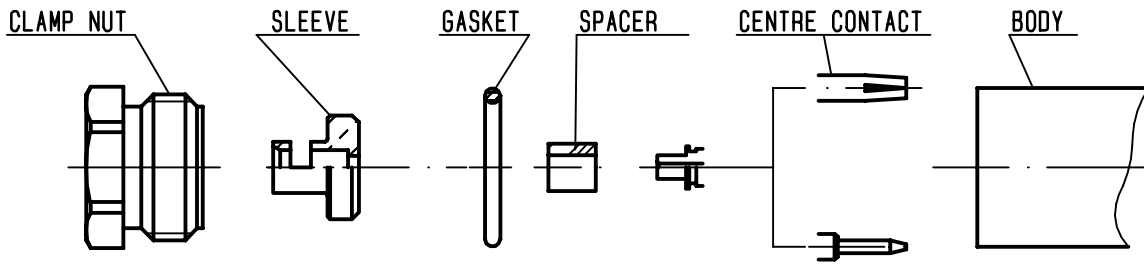
The information given here is subject to change without notice.
Design changes may be in order to improve the product .

LELEU



R161.322.200

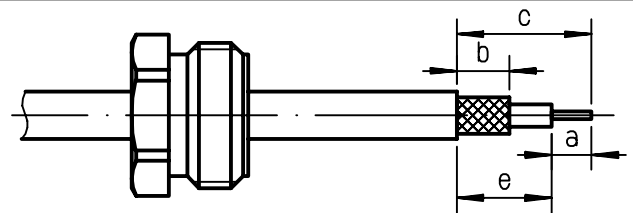
ISSUE **9843C00** SERIES **N**



①

Slide clamp nut onto cable .
Strip the cable .

-
-
-

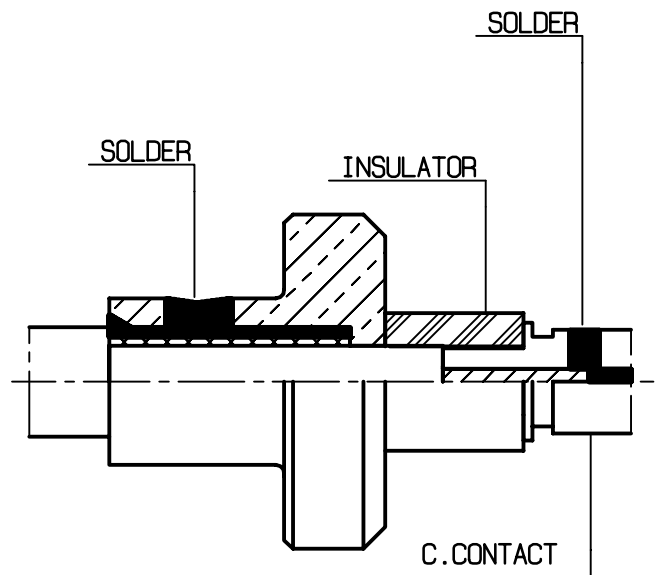


Stripping	a	b	c	d	e
inch	0.157	0.217	0.449	0	0.291
mm	4	5.5	11.4		7.4

②

Slide the sleeve between the braid .
Solder the braid into the sleeve .
Slide the spacer .

-
-
-
-



③

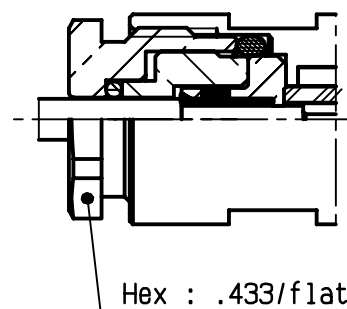
Solder the cable inner conductor into
centre contact .
Slide the back nut over the clamp
assembly .

-
-
-
-

④

Mount the gasket into the connector .
Screw sub-assembly into the connector
body .
(recommended coupling torque 39.825 in.lb)

-



Hex : .433/flats